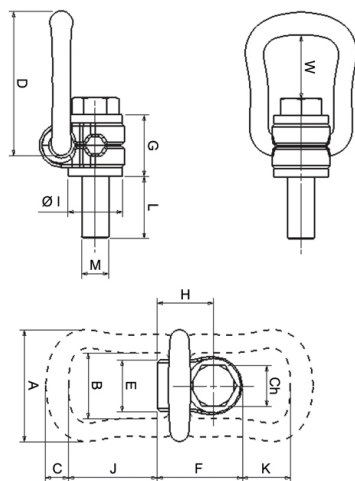


Cartec 806 Rotating Eye Bolt with Clamp



Part No.	WLL	Size	A	B	C	D	E	F	G	H	I	L	W	J	K	Ch	Mass
UNI	tonnes	mm	mm	mm	mm	mm	mm	mm	mm	mm	mm	mm	mm	mm	mm	mm	kg
2250 08	0.3	M8	57	34	10	78	24	41	30	26.5	25	15	43	51	35	13	0.275
2250 10	0.63	M10	57	34	10	78	24	41	30	26.5	25	15	42	51	35	17	0.29
2250 12	1.0	M12	66	38	13.5	85	30	50	36	33	32	23	40	52	28	19	0.5
2250 16	1.5	M16	66	38	13.5	85	30	50	36	33	32	24	38	52	28	24	0.51
2250 20	2.5	M20	87	55	16	111	48	68	44	42.5	45	31	54	71	36	30	1.25
2250 24	4.0	M24	87	55	16	111	48	68	44	42.5	45	37	51	71	36	36	1.3
2250 27	4.0	M27	109	66	22.5	145	54	91	63	58.5	60	37	64	86	47	41	3.15
2250 30	5.0	M30	109	66	22.5	145	54	91	65	58.5	60	45	62	86	47	46	3.25
2250 36	7.0	M36	109	66	22.5	145	54	91	55	58.5	60	50	60	86	43	55	3.3
2250 37	8.0	M36	136	78	28	190	62	108	81	72.5	70	59	88	115	74	55	5.9
2250 42	10.0	M42	136	78	28	190	62	108	75	72.5	70	75	86	115	70	65	6.5
2250 43	15.0	M42	169	97	36	242	68	131	89	87.5	85	61	121	151	97	65	11.2
2250 48	20.0	M48	169	97	36	242	68	131	89	87.5	95	71	117	151	93	75	11.6



W.L.L (tonnes)

Part No.	WLL	Size	0°		90°		0°-45°		45°-60°		45°-60°		Tighten
			1 leg	2 leg	1 leg	2 leg	2 leg	2 leg	2 leg	4 leg			
2250 08	0.3	M8	0.3	0.6	0.3	0.6	0.42	0.3	0.3	0.63	0.45	0.3	30
2250 10	0.63	M10	0.63	1.26	0.63	1.26	0.88	0.63	0.63	1.32	0.95	0.63	60
2250 12	1.0	M12	1.0	2.0	1.0	2.0	1.4	1.0	1.0	2.1	1.5	1.0	100
2250 16	1.5	M16	1.5	3.0	1.5	3.0	2.1	1.5	1.5	3.15	2.25	1.5	150
2250 20	2.5	M20	2.5	5.0	2.5	5.0	3.5	2.5	2.5	5.25	3.75	2.5	250
2250 24	4.0	M24	4.0	8.0	4.0	8.0	5.6	4.0	4.0	8.4	6.0	4.0	400
2250 27	4.0	M27	4.0	8.0	4.0	8.0	5.6	4.0	4.0	8.4	6.0	4.0	400
2250 30	5.0	M30	5.0	10.0	5.0	10.0	7.0	5.0	5.0	10.5	7.5	5.0	500
2250 36	7.0	M36	7.0	14.0	7.0	14.0	9.8	7.0	7.0	14.7	10.4	7.0	700
2250 37	8.0	M36	8.0	16.0	8.0	16.0	11.2	8.0	8.0	16.8	12.0	8.0	800
2250 42	10.0	M42	10.0	20.0	10.0	20.0	14.0	10.0	10.0	21.0	15.0	10.0	925
2250 43	15.0	M42	15.0	30.0	15.0	30.0	21.0	15.0	15.0	31.5	22.5	15.0	1500
2250 48	20.0	M48	20.0	40.0	20.0	40.0	28.0	20.0	20.0	42.0	30.0	20.0	2000

