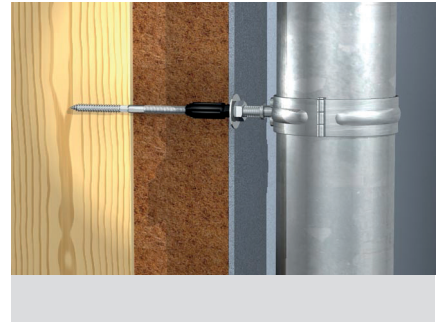
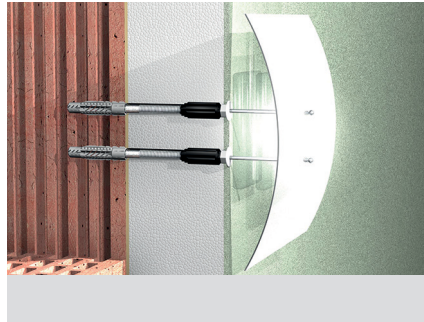


The thermally separated stand-off installation in external thermal insulation composite systems (ETICS)



BUILDING MATERIALS

- Concrete
- Vertically perforated brick
- Hollow blocks made from lightweight concrete
- Perforated sand-lime brick
- Solid sand-lime brick
- Building brick
- Aerated concrete
- Wood

ADVANTAGES

- The stand-off installation allows for the fixture to be adjusted to the exact position required, whereby pressure marks and damage to the ETICS are avoided.
- The plastic cone creates a thermal barrier between the fixture and the inner fixture, and offers an energy-optimised fixing.
- The glass-fibre-reinforced plastic cone cuts its own way through the ETICS with a positive fit, and allows for a simple and fast installation without the need for any special tools.
- Combining Thermax 8 and 10 with the universal plug UX provides a secure anchoring in the substrate.
- Without UX plug direct mounting in wood substrate is possible after pre-drilling.

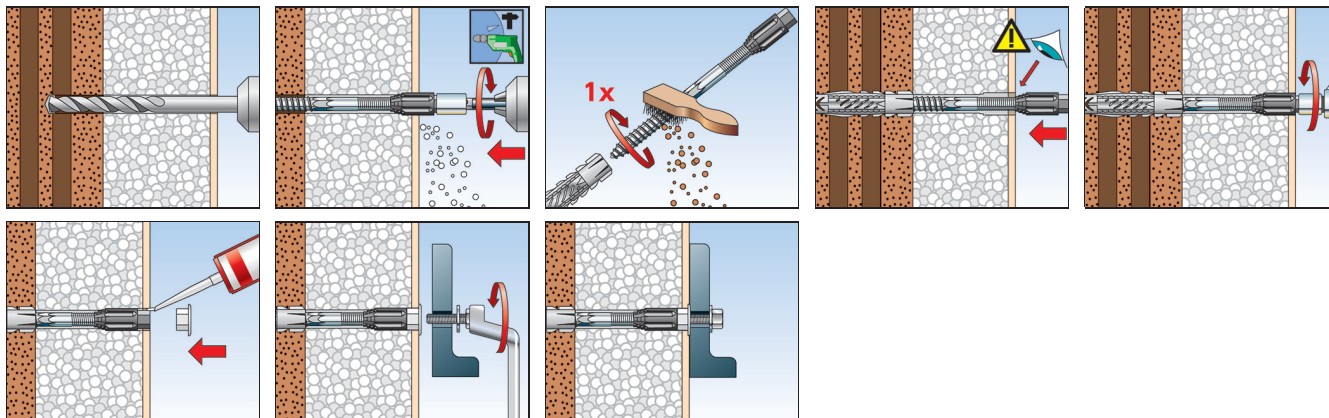
APPLICATIONS

- Signs
- Lighting
- Letter boxes
- Motion detectors
- Downpipes
- Lightning rods
- Blind guide rails

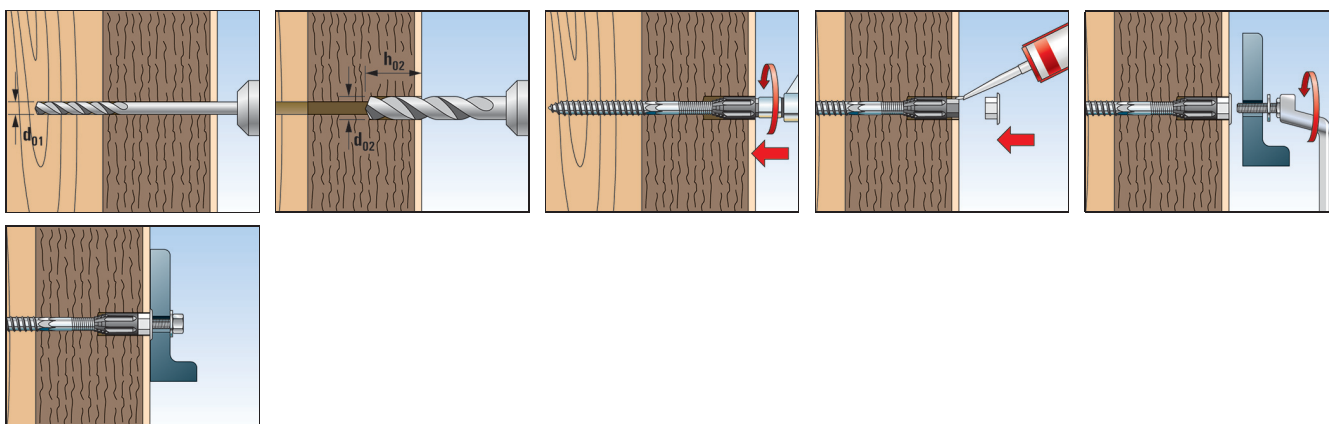
FUNCTIONING

- The Thermax 8 and 10 systems are suitable for pre-positioned installation.
- The self-tapping, glass-fibre-reinforced cone cuts its own way through the plaster into the insulation during installation.
- The anti-cold cone uses a thermal barrier to minimise heat losses.
- Installation without any special tools.
- For use in wood without plug, the wood (footnote below load table) as well as the plaster has to be pre-drilled:
Thermax 8:
 $d_{02} = 14 \text{ mm}$, $h_{02} = 50 \text{ mm}$;
Thermax 10:
 $d_{02} = 18 \text{ mm}$, $h_{02} = 50 \text{ mm}$
- The extensive range features fitting options with metric screws (M6/8/10), sheet screws (6.3 mm), chipboard screws (6.0 mm) or chipboard screws (4.5 - 5.5 mm) when using an SX 5 expansion plug.

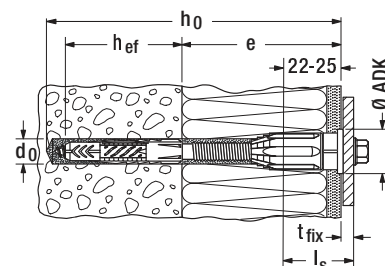
INSTALLATION - MASONRY



INSTALLATION - WOOD SUBSTRATE



TECHNICAL DATA

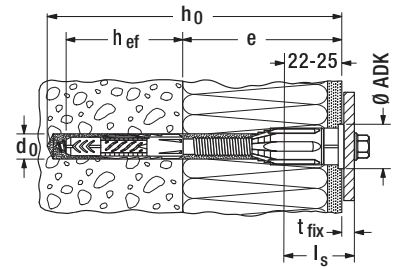


Item	Art.-No.	Drill hole diameter d_0 [mm]	Drill hole depth h_0 [mm]	Usable length e [mm]	Anchorage depth h_{ef} [mm]	Cover cap- \varnothing ADK [mm]	Width across nut $\varnothing SW$ [mm]	Chipboard / metric / sheet metal screw	Sales unit [pcs]
Thermax 8/60 M6	045685 1) 2)	10	120	45 - 60	60	18	10	4,5 - 6,0 / M6 / 6,3	20
Thermax 8/80 M6	045686 1) 2)	10	140	60 - 80	60	18	10	4,5 - 6,0 / M6 / 6,3	20
Thermax 8/100 M6	045687 1) 2)	10	160	80 - 100	60	18	10	4,5 - 6,0 / M6 / 6,3	20
Thermax 8/120 M6	045688 1) 2)	10	180	100 - 120	60	18	10	4,5 - 6,0 / M6 / 6,3	20
Thermax 8/140 M6	045689 1) 2)	10	200	120 - 140	60	18	10	4,5 - 6,0 / M6 / 6,3	20
Thermax 8/160 M6	045690 1) 2)	10	220	140 - 160	60	18	10	4,5 - 6,0 / M6 / 6,3	20
Thermax 8/180 M6	045691 1) 2)	10	240	160 - 180	60	18	10	4,5 - 6,0 / M6 / 6,3	20
Thermax 10/100 M6	045692 1) 2)	12	160	80 - 100	70	22	13	4,5 - 6,0 / M6 / 6,3	20
Thermax 10/120 M6	045693 1) 2)	12	180	100 - 120	70	22	13	4,5 - 6,0 / M6 / 6,3	20
Thermax 10/140 M6	045694 1) 2)	12	200	120 - 140	70	22	13	4,5 - 6,0 / M6 / 6,3	20
Thermax 10/160 M6	045695 1) 2)	12	220	140 - 160	70	22	13	4,5 - 6,0 / M6 / 6,3	20
Thermax 10/180 M6	045696 1) 2)	12	240	160 - 180	70	22	13	4,5 - 6,0 / M6 / 6,3	20
Thermax 10/200 M6	512605 1) 2)	12	260	180 - 200	70	22	13	4,5 - 6,0 / M6 / 6,3	20

1) including SX 5

2) Min. screw length $l_s = 22\text{mm} + \text{thickness of mounting member } e$; for use in wood without universal plug UX, consider drill hole diameter in footnote under load table.

TECHNICAL DATA



5 Frame fixings / Stand-off installation

Item	Art.-No.	Drill hole diameter d_0 [mm]	Drill hole depth h_0 [mm]	Usable length e [mm]	Anchorage depth h_{ef} [mm]	Cover cap-Ø ADK [mm]	Width across nut \circ SW [mm]	Chipboard / metric / sheet metal screw	Sales unit [pcs]
Thermax 10/220 M6	514250 ^{1) 2)}	12	280	200 - 220	70	22	13	4,5 - 6,0 / M6 / 6,3	20
Thermax 10/240 M6	514251 ^{1) 2)}	12	300	220 - 240	70	22	13	4,5 - 6,0 / M6 / 6,3	20
Thermax 10/100 M8	045697 ²⁾	12	160	80 - 100	70	22	13	M8	20
Thermax 10/120 M8	045698 ²⁾	12	180	100 - 120	70	22	13	M8	20
Thermax 10/140 M8	045699 ²⁾	12	200	120 - 140	70	22	13	M8	20
Thermax 10/160 M8	045700 ²⁾	12	220	140 - 160	70	22	13	M8	20
Thermax 10/180 M8	514252 ²⁾	12	240	160 - 180	70	22	13	M8	20
Thermax 10/200 M8	514253 ²⁾	12	260	180 - 200	70	22	13	M8	20
Thermax 10/220 M8	514254 ²⁾	12	280	200 - 220	70	22	13	M8	20
Thermax 10/240 M8	514255 ²⁾	12	300	220 - 240	70	22	13	M8	20
Thermax 10/100 M10	045702 ²⁾	12	160	80 - 100	70	22	13	M10	20
Thermax 10/120 M10	045703 ²⁾	12	180	100 - 120	70	22	13	M10	20
Thermax 10/140 M10	045704 ²⁾	12	200	120 - 140	70	22	13	M10	20
Thermax 10/160 M10	045705 ²⁾	12	220	140 - 160	70	22	13	M10	20
Thermax 10/180 M10	514256 ²⁾	12	240	160 - 180	70	22	13	M10	20
Thermax 10/200 M10	514257 ²⁾	12	260	180 - 200	70	22	13	M10	20
Thermax 10/220 M10	514258 ²⁾	12	280	200 - 220	70	22	13	M10	20
Thermax 10/240 M10	514259 ²⁾	12	300	220 - 240	70	22	13	M10	20

1) including SX 5

2) Min. screw length $l_s = 22\text{mm} + \text{thickness of mounting member } e$; for use in wood without universal plug UX, consider drill hole diameter in footnote under load table.

LOADS

Type		Thermax 8	Thermax 10
Recommended tensile loads in the respective base material N_{rec} ²⁾			
Solid brick ^{3) 4)}	$\geq Mz$ 12 [kN]	0,50	0,70
Vertically perforated brick ⁴⁾	$\geq Hlz$ 12 [kN]	0,20	0,30
Recommended shear load V_{rec}, valid für all above mentioned base materials for the stated insulation thickness			